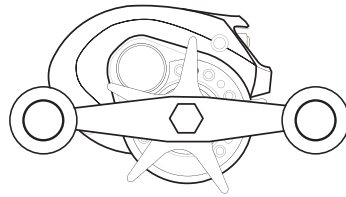


# Lew's® SUPERDUTY WIDE SPEED SPOOL®

SDW2S, SDW2H, SDW2SH, SDW2XH



Speed Spool Baitcast reels are designed to be Lighter, *Faster* and **Stronger**

*Driven by innovation – Fueled with Passion*  
**Feel the Difference!**

## SUPERDUTY WIDE SPEED SPOOL®

### Reel Specifications

#### Line Capacity

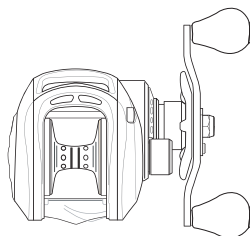
Model	Weight oz.	Gear Ratio	yds./lb.	IPT
SDW2S	8.1	5.1:1	190/14	21"
SDW2H	8.1	6.4:1	190/14	28"
SDW2S	8.1	7.1:1	190/14	31"
SDW2XH	8.1	8.0:1	190/14	35"
SDW2SHL*	8.1	7.1:1	190/14	31"

\*Left hand retrieve.

### FEATURES:

- One-piece aluminum frame and handle sideplate
- Carbon fiber drag system
- Magnetic Control System (MCS)
- Audible click spool tension adjustment knob
- 11-bearing system, 10 Double-shielded stainless steel ball bearings and Zero-Reverse Bearing
- Machined forged aluminum spool
- Extended 95mm bowed aluminum handle with Lew's® custom EVA handle Knobs

### 11 Bearing System



## Performance—Right out of the Box!

Your Super Duty Wide Speed Spool® baitcast reel is designed for performance and functionality. From the way it conforms to your hand, to the way it reacts crisply and effortlessly to your command, you'll know the minute you grab onto the Super Duty Wide Speed Spool® that you've got a quality reel.

Your Super Duty Wide Speed Spool® reel exploits several new developments which will allow you to set yourself apart from the competition.

### One-piece Aluminum Frame

Your Super Duty Wide Speed Spool® reel utilizes a one-piece all aluminum frame. So you'll never have to worry about frame or gears twisting or torquing.

### Lightweight Machined Forged Aluminum Spool

*Machined Forged Aluminium Spool*

The spool on your Lew's® reel has been engineered to maximize casting distance. Double anodized to withstand oxidation and abrasion, this lightweight machined forged U shaped large capacity aluminum spool will allow you to propel your lure farther than the competition—and you'll have a great degree control with less standing between you and the fish.

### Zero-Reverse Bearing

The handle on your Super Duty Wide Speed Spool® will only rotate forward for rock solid hook setting power. When you release the handle it will hold its position because of the Zero-Reverse one way clutch bearing, never losing an inch on your catch; an invaluable property to have when you're pulling it in.

### Full-Release Magnetic Control System

Magnetic Control System **MCS**

In order to combat backlash your Super Duty Wide Speed Spool® reel is furnished with an externally adjustable, full-release magnetic braking system. As the spool accelerates it experiences magnetic resistance, which can be controlled with a dial on the palming sideplate. A full-release magnetic brake has the ability to be backed far enough away from the spool to completely negate any effect on the acceleration of the spool.



### Cast Control System

A second feature exists to prevent backlash, the Cast Control System. An adjustment knob is found next to the star drag. The function saddles the spool shaft with steady pressure in order to stabilize spool speed.

To calibrate the system reel your lure in until it rests on the tip of the rod, then tighten the knob until taut. Depress the thumb bar, and holding the rod horizontally loosen the knob slowly until the lure begins to descend. The spool should continue to spin after the lure contacts the ground, but should not complete more than one full rotation. If the spool does not continue to spin, the knob is too tight. If the spool completes more than one rotation, the knob is too loose. Repeat until you have achieved the desired results.

### Bowed 95MM Aluminum Handle

The 95mm bowed aluminum handle will give you all the cranking power you need. The Lew's® custom EVA handle knobs are an added bonus and will provide comfortable fit for all day fishing.



# SUPERDUTY WIDE SPEED SPOOL®

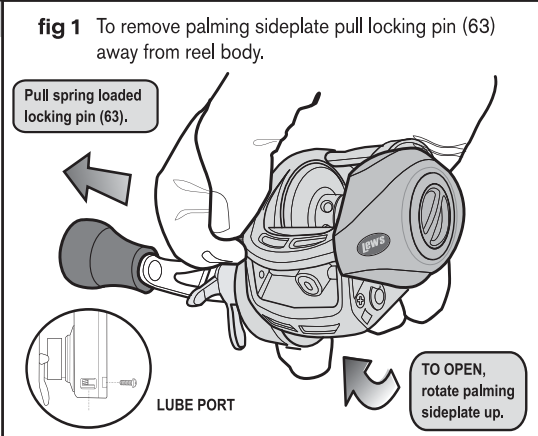
SDW2S, SDW2H, SDW2SH, SDW2XH

One Year Limited Warranty

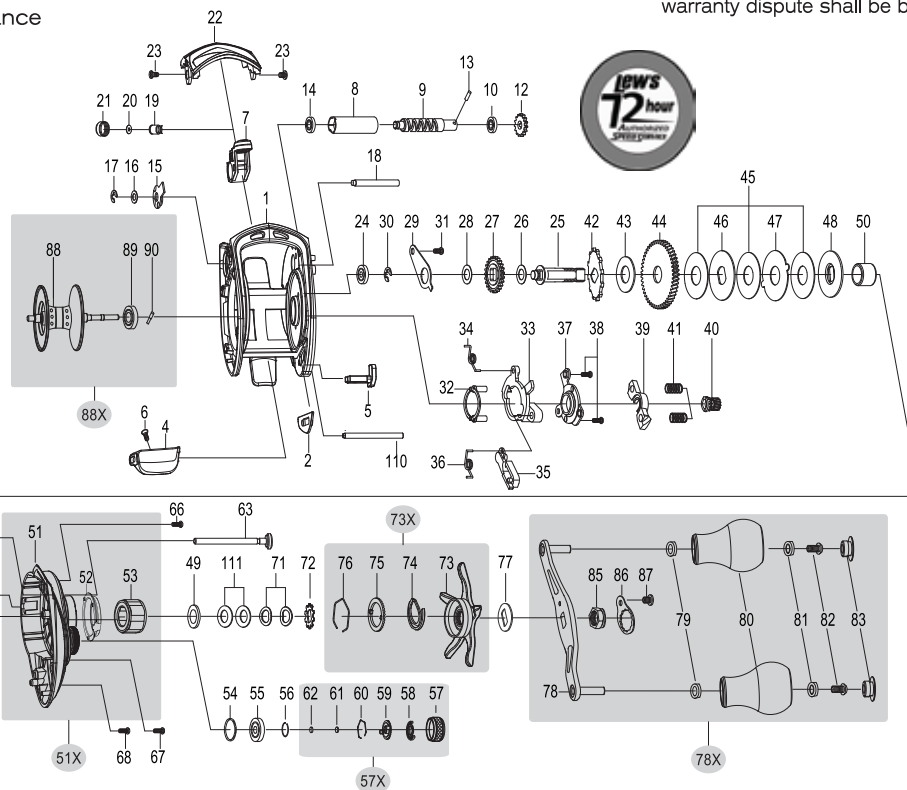
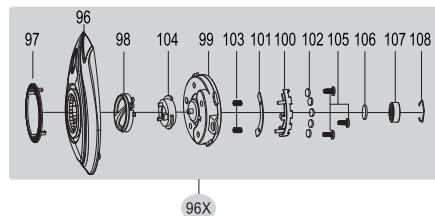
## Maintenance and Care

When applying lubricant to your Speed Spool® reel, avoid using multi-purpose oil. Use lightweight oils or greases made for fishing reels. Apply oil to all bearings, the crankshaft and the worm gear. Apply grease to the bushings, pinion gears, drive gears, and crank gears.

After usage, your reel should be inspected for dirt or sand and cleaned if excessive build-up is present. If your reel has come in contact with saltwater it is important to flush all parts with water, dry and re-lubricate your reel. Through diligent cleaning and maintenance your Lew's® reel will provide you with years of reliability and sound performance.



For professional cleaning and maintenance send your reel postage prepaid to:  
Lew's 3031 N. Martin Ave.  
Springfield, MO 65803  
Phone: 877-470-5397  
FAX: 1-417-881-5387  
lews.com



KEY #	PART NAME	KEY #	PART NAME	KEY #	PART NAME
1	FRAME	40	PINION GEAR	74	CLICKER
4	CLUTCH BAR	41	PINION YOKE SPRING (2)	75	CLICK PLATE
6	CLUTCH BAR SCREW	42	RATCHET	76	CLICK PLATE RETAINER
7	LEVELWIND ASSEMBLY	43	RATCHET WASHER	77	LEAF SPRING
8	PIPE	44	DRIVE GEAR	78	HANDLE
9	WORM SHAFT	45	DRAG WASHER (L-3)	78X	HANDLE ASSEMBLY
10	BALL BEARING	46	DRAG WASHER (D-1)	79	BUSHING
12	IDLER(S)	47	DRAG WASHER (A)	80	HANDLE KNOB
13	WORM SHAFT PIN	48	DRAG WASHER (D-2)	81	BALL BEARING (2)
15	WORM SHAFT BUSHING (B)	49	SLEEVE WASHER (OPTIONAL)	82	HANDLE KNOB SCREW
16	WORM SHAFT WASHER	50	SLEEVE	83	HANDLE KNOB CAP
17	E-RING	51	GEAR SIDEPLATE	85	HANDLE NUT
18	PILLAR	51X	GEAR SIDEPLATE ASSEMBLY	86	HANDLE NUT CAP
19	LEVELWIND PIN	53	ONE-WAY CLUTCH BEARING	87	SCREW
20	SPACER (OPTIONAL)	54	O-RING	88	SPOOL
21	LEVELWIND NUT	55	BALL BEARING	88X	SPOOL ASSEMBLY
22	FRONT COVER	56	BEARING RETAINER	89	BALL BEARING
23	FRONT COVER SCREW (2)	57	CAST CONTROL CAP	90	PIN
24	BALL BEARING	57X	CAST CONTROL CAP ASSEMBLY	96	PALMING SIDEPLATE
25	CRANK SHAFT	61	TENSION WASHER	96X	PALMING SIDEPLATE ASSEMBLY
26	IDLER (L) WASHER (A)	62	SPOOL SPACER (B)	97	PALMING SIDEPLATE TRIM
27	IDLER (L)	63	LOCKING PIN	98	CONTROL DIAL
28	IDLER(L) WASHER (B)	64	E-RING	99	SPOOL COVER
29	BEARING PLATE	65	LOCKING PIN SPRING	101	MAGNET HOLDER PLATE-F
30	E-RING	66	GEAR SIDEPLATE SCREW (A)	102	MAGNET (5)
31	BEARING PLATE SCREW	67	GEAR SIDEPLATE SCREW (B)	103	MAGNET HOLDER SPRING (2)
33	CLUTCH CAM	68	GEAR SIDEPLATE SCREW (C)	103	SLIDE CAM-F
34	CLUTCH SPRING	69	LUBE PORT	105	SPOOL COVER SCREW (3)
35	KICK LEVER	70	LUBE PROT SCREW	106	SPOOL SPACER-A
36	KICK LEVER SPRING	71	DRAG SPRING WASHER (A-2)	107	BALL BEARING
37	CLUTCH LINK	72	DRAG SPACER	108	BEARING RETAINER
38	CLUTCH LINK SCREW	73	STAR DRAG	124	SLIDE CAM-D
39	PINION YOKE	73X	STAR DRAG ASSEMBLY	125	CLICK SPRING

Lew's® warrants its products<sup>1</sup> to withstand normal<sup>2</sup> use for the purpose designed and intended when manufactured for a period of one (1) year from the original retail sale date to the original retail consumer. Lew's® will at its option repair or replace<sup>3</sup> Lew's® products when required for the warranty period and return<sup>4</sup> the product to the owner at no additional<sup>5</sup> cost to the owner.

<sup>1</sup>Numerous products have been manufactured under variations of the Lew's® name and under the Lew's® Logo by multiple businesses over the past 50 years. This warranty is specifically for products manufactured on behalf of Lew's® of Springfield, Missouri USA since January 1, 2010. Lew's® products manufactured by or on behalf of other entities prior to January 1, 2010 are not covered by this warranty. In all circumstances, this Warranty is Limited in Value to the original retail value of the product and is limited to actual damage to the Lew's® product and only the Lew's® product. <sup>2</sup>Loss of a product, and loss/damage of a product or parts due to the attempted repair or servicing of a Lew's® product by any person or business other than Lew's® or Lew's® Authorized Warranty Service Agent, and damage caused by or resulting from abuse, misuse, lack of recommended maintenance, accident, acts of God, and shipping damages occurring in transit to Lew's® or Lew's® Authorized Agent are outside the scope of Lew's® Limited Warranty and will be repaired through Lew's® after warranty services at the expense of the consumer. <sup>3</sup>Any products replaced by Lew's® will be new or remanufactured by a Lew's® Authorized Agent with the same or next model upgrade product. <sup>4</sup>Lew's® will return warranted products to the consumer by reasonable means as determined by Lew's®, <sup>5</sup>Express or expedited services are the responsibility of the consumer as is sending the product to Lew's® or Lew's® Authorized Agent, for Warranty Service. Lew's® and Lew's® Service Agents as authorized by Lew's® are the sole agents authorized to repair or replace Lew's® products under the terms of this warranty. Only written changes by an officer of Lew's® can alter the terms or conditions of this warranty.

This warranty gives you specific legal rights including additional rights extended by some states which do not allow certain exclusions and limitations. Any action brought against Lew's® for the purpose of settling a warranty dispute shall be brought and litigated in the State of Missouri, County of Greene.

## SDW2S

Key #	Description	Order ID #	Key #	Description	Order ID #
1	FRAME	DY-102650060	54	O-RING	DY-100209020
2	CLUTCH BAR PLATE-R/L	DY-102327010	55	BALL BEARING	DY-104541010
4	CLUTCH BAR	DY-102652010	56	BEARING RETAINER	DY-101588011
5	CLUTCH LINK	DY-102328010	57X	CAST CONTROL CAP ASSEMBLY	DY-U02254060
6	CLUTCH BAR SCREW	DY-100335020	58	CLICKER	DY-101674011
7	LEVEL WIND ASSEMBLY	DY-102329010	59	CLICK PLATE	DY-101675011
8	PIPE	DY-100491022	60	CLICK PLATE RETAINER	DY-101543012
9	WORM SHAFT	DY-103464010	61	TENSION WASHER	DY-100073011
10	BALL BEARING	DY-104544010	62	SPOOL SPACER-B	DY-100074011
12	IDLER-S	DY-100019010	63	LOCKING PIN	DY-103648040
13	WORM SHAFT PIN	DY-100020010	64	E-RING	DY-100621010
15	WORM SHAFT BUSHING-B	DY-100145011	65	LOCKING PIN SPRING	DY-101308010
16	WORM SHAFT WASHER	DY-100539020	66	GEAR SIDE COVER SCREW-A	DY-100035010
17	E-RING	DY-100047010	67	GEAR SIDE COVER SCREW-B	DY-100035020
18	PILLAR-B	DY-102676010	68	GEAR SIDE COVER SCREW-C	DY-102341010
19	LEVEL WIND PIN	DY-100464011	69	LUBE PORT CAP	DY-101698140
20	SPACER(OPTIONAL)	DY-100025010	70	LUBE PORT CAP SCREW	DY-100202020
21	LEVEL WIND NUT	DY-100288021	71	DRAG SPRING WASHER	DY-100088010
22	FRONT COVER	DY-102651060	72	CLICK HOLDER	DY-101765010
23	FRONT COVER SCREW	DY-100152010	73X	STAR DRAG COMPLETE	DY-U02545142
24	BALL BEARING	DY-104542010	74	CLICKER	DY-101763010
25	CRANK SHAFT	DY-103267010	75	CLICK PLATE	DY-101764010
26	IDLER-L WASHER-A	DY-100548010	76	CLICK PLATE RETAINER	DY-101766011
27	IDLER-L	DY-101938020	77	HANDLE WASHER	DY-100933010
28	IDLER-L WASHER-B	DY-100045020	78X	HANDLE COMPLETE	DY-101806170
29	BEARING PLATE	DY-100817011	79	BALL BEARING	DY-104543010
30	E-RING	DY-100047010	80	HANDLE KNOB	DY-102986010
31	BEARING PLATE SCREW	DY-100112040	81	BALL BEARING	DY-104543010
32	YOKE HOLDER	DY-100029010	82	HANDLE KNOB SCREW	DY-100180010
33	CLUTCH CAM	DY-100666012	83	HANDLE KNOB CAP	DY-101851100
34	CLUTCH SPRING	DY-101336011	85	HANDLE NUT	DY-100319090
35	KICK LEVER	DY-102307011	86	HANDLE NUT RETAINER	DY-101798020
36	KICK LEVER SPRING	DY-102048010	87	SCREW	DY-101202020
37	CAM PLATE	DY-101364010	88X	SPOOL COMPLETE	DY-102682050
38	CAM PLATE SCREW	DY-100697020	89	BALL BEARING	DY-100156010
39	PINION YOKE	DY-102073010	90	PIN	DY-100120010
40	PINION GEAR	DY-101567012	96X	PALM SIDE PLATE ASSEMBLY	DY-UA2322050
41	PINION YOKE SPRING	DY-100059020	98	CONTROL DIAL	DY-101699140
42	RATCHET	DY-100344010	99	SPOOL COVER	DY-101304011
43	RATCHET WASHER	DY-102247050	100	MAGNET HOLDER ASSEMBLY	DY-U00676012
44	DRIVE GEAR	DY-101565010	103	SPRING	DY-100486010
45	DRAG WASHER-L	DY-102377010	104	SLIDE CAM	DY-101848010
46	DRAG WASHER-D1	DY-100057020	105	SPOOL COVER SCREW	DY-100141010
47	DRAG WASHER-A	DY-100985010	106	SPOOL SPACER-A	DY-101850010
48	DRAG WASHER-D2	DY-100986011	107	BALL BEARING	DY-100155010
49	SLEEVE WASHER(OPTIONAL)	DY-100086020	108	BEARING RETAINER	DY-102976010
50	SLEEVE	DY-100418011	110	PILLAR-A	DY-102675010
51X	GEAR SIDE PLATE ASSEMBLY	DY-U02541070	111	DRAG SPRING WASHER	DY-101205010
53	ONE WAY CLUTCH	DY-101515010			

## SDW2H

Key #	Description	Order ID #		Key #	Description	Order ID #
1	FRAME	DY-102650060		54	O-RING	DY-100209020
2	CLUTCH BAR PLATE-R/L	DY-102327010		55	BALL BEARING	DY-104541010
4	CLUTCH BAR	DY-102652010		56	BEARING RETAINER	DY-101588011
5	CLUTCH LINK	DY-102328010		57X	CAST CONTROL CAP ASSEMBLY	DY-U02254060
6	CLUTCH BAR SCREW	DY-100335020		58	CLICKER	DY-101674011
7	LEVEL WIND ASSEMBLY	DY-102329010		59	CLICK PLATE	DY-101675011
8	PIPE	DY-100491022		60	CLICK PLATE RETAINER	DY-101543012
9	WORM SHAFT	DY-103464010		61	TENSION WASHER	DY-100073011
10	BALL BEARING	DY-104544010		62	SPOOL SPACER-B	DY-100074011
12	IDLER-S	DY-100019010		63	LOCKING PIN	DY-103648040
13	WORM SHAFT PIN	DY-100020010		64	E-RING	DY-100621010
15	WORM SHAFT BUSHING-B	DY-100145011		65	LOCKING PIN SPRING	DY-101308010
16	WORM SHAFT WASHER	DY-100539020		66	GEAR SIDE COVER SCREW-A	DY-100035010
17	E-RING	DY-100047010		67	GEAR SIDE COVER SCREW-B	DY-100035020
18	PILLAR-B	DY-102676010		68	GEAR SIDE COVER SCREW-C	DY-102341010
19	LEVEL WIND PIN	DY-100464011		69	LUBE PORT CAP	DY-101698140
20	SPACER(OPTIONAL)	DY-100025010		70	LUBE PORT CAP SCREW	DY-100202020
21	LEVEL WIND NUT	DY-100288021		71	DRAG SPRING WASHER	DY-100088010
22	FRONT COVER	DY-102651060		72	CLICK HOLDER	DY-101765010
23	FRONT COVER SCREW	DY-100152010		73X	STAR DRAG COMPLETE	DY-U02545152
24	BALL BEARING	DY-104542010		74	CLICKER	DY-101763010
25	CRANK SHAFT	DY-103267010		75	CLICK PLATE	DY-101764010
26	IDLER-L WASHER-A	DY-100548010		76	CLICK PLATE RETAINER	DY-101766011
27	IDLER-L	DY-101938020		77	HANDLE WASHER	DY-100933010
28	IDLER-L WASHER-B	DY-100045020		78X	HANDLE COMPLETE	DY-101806170
29	BEARING PLATE	DY-100817011		79	BALL BEARING	DY-104543010
30	E-RING	DY-100047010		80	HANDLE KNOB	DY-102986010
31	BEARING PLATE SCREW	DY-100112040		81	BALL BEARING	DY-104543010
32	YOKE HOLDER	DY-100029010		82	HANDLE KNOB SCREW	DY-100180010
33	CLUTCH CAM	DY-100666012		83	HANDLE KNOB CAP	DY-101851100
34	CLUTCH SPRING	DY-101336011		85	HANDLE NUT	DY-100319090
35	KICK LEVER	DY-102307011		86	HANDLE NUT RETAINER	DY-101798020
36	KICK LEVER SPRING	DY-102048010		87	SCREW	DY-101202020
37	CAM PLATE	DY-101364010		88X	SPOOL COMPLETE	DY-102682050
38	CAM PLATE SCREW	DY-100697020		89	BALL BEARING	DY-100156010
39	PINION YOKE	DY-102073010		90	PIN	DY-100120010
40	PINION GEAR	DY-100982013		96X	PALM SIDE PLATE ASSEMBLY	DY-UA2322050
41	PINION YOKE SPRING	DY-100059020		98	CONTROL DIAL	DY-101699140
42	RATCHET	DY-100344010		99	SPOOL COVER	DY-101304011
43	RATCHET WASHER	DY-102247050		100	MAGNET HOLDER ASSEMBLY	DY-U00676012
44	DRIVE GEAR	DY-100974010		103	SPRING	DY-100486010
45	DRAG WASHER-L	DY-102377010		104	SLIDE CAM	DY-101848010
46	DRAG WASHER-D1	DY-100057020		105	SPOOL COVER SCREW	DY-100141010
47	DRAG WASHER-A	DY-100985010		106	SPOOL SPACER-A	DY-101850010
48	DRAG WASHER-D2	DY-100986011		107	BALL BEARING	DY-100155010
49	SLEEVE WASHER(OPTIONAL)	DY-100086020		108	BEARING RETAINER	DY-102976010
50	SLEEVE	DY-100418011		110	PILLAR-A	DY-102675010
51X	GEAR SIDE PLATE ASSEMBLY	DY-U02541080		111	DRAG SPRING WASHER	DY-101205010
53	ONE WAY CLUTCH	DY-101515010				

## SDW2SH

Key #	Description	Order ID #	Key #	Description	Order ID #
1	FRAME	DY-102650060	54	O-RING	DY-100209020
2	CLUTCH BAR PLATE-R/L	DY-102327010	55	BALL BEARING	DY-104541010
4	CLUTCH BAR	DY-102652010	56	BEARING RETAINER	DY-101588011
5	CLUTCH LINK	DY-102328010	57X	CAST CONTROL CAP ASSEMBLY	DY-U02254060
6	CLUTCH BAR SCREW	DY-100335020	58	CLICKER	DY-101674011
7	LEVEL WIND ASSEMBLY	DY-102329010	59	CLICK PLATE	DY-101675011
8	PIPE	DY-100491022	60	CLICK PLATE RETAINER	DY-101543012
9	WORM SHAFT	DY-103464010	61	TENSION WASHER	DY-100073011
10	BALL BEARING	DY-104544010	62	SPOOL SPACER-B	DY-100074011
12	IDLER-S	DY-100019010	63	LOCKING PIN	DY-103648040
13	WORM SHAFT PIN	DY-100020010	64	E-RING	DY-100621010
15	WORM SHAFT BUSHING-B	DY-100145011	65	LOCKING PIN SPRING	DY-101308010
16	WORM SHAFT WASHER	DY-100539020	66	GEAR SIDE COVER SCREW-A	DY-100035010
17	E-RING	DY-100047010	67	GEAR SIDE COVER SCREW-B	DY-100035020
18	PILLAR-B	DY-102676010	68	GEAR SIDE COVER SCREW-C	DY-102341010
19	LEVEL WIND PIN	DY-100464011	69	LUBE PORT CAP	DY-101698140
20	SPACER(OPTIONAL)	DY-100025010	70	LUBE PORT CAP SCREW	DY-100202020
21	LEVEL WIND NUT	DY-100288021	71	DRAG SPRING WASHER	DY-100088010
22	FRONT COVER	DY-102651060	72	CLICK HOLDER	DY-101765010
23	FRONT COVER SCREW	DY-100152010	73X	STAR DRAG COMPLETE	DY-U02545132
24	BALL BEARING	DY-104542010	74	CLICKER	DY-101763010
25	CRANK SHAFT	DY-103267010	75	CLICK PLATE	DY-101764010
26	IDLER-L WASHER-A	DY-100548010	76	CLICK PLATE RETAINER	DY-101766011
27	IDLER-L	DY-101938020	77	HANDLE WASHER	DY-100933010
28	IDLER-L WASHER-B	DY-100045020	78X	HANDLE COMPLETE	DY-101806170
29	BEARING PLATE	DY-100817011	79	BALL BEARING	DY-104543010
30	E-RING	DY-100047010	80	HANDLE KNOB	DY-102986010
31	BEARING PLATE SCREW	DY-100112040	81	BALL BEARING	DY-104543010
32	YOKE HOLDER	DY-100029010	82	HANDLE KNOB SCREW	DY-100180010
33	CLUTCH CAM	DY-100666012	83	HANDLE KNOB CAP	DY-101851100
34	CLUTCH SPRING	DY-101336011	85	HANDLE NUT	DY-100319090
35	KICK LEVER	DY-102307011	86	HANDLE NUT RETAINER	DY-101798020
36	KICK LEVER SPRING	DY-102048010	87	SCREW	DY-101202020
37	CAM PLATE	DY-101364010	88X	SPOOL COMPLETE	DY-102682050
38	CAM PLATE SCREW	DY-100697020	89	BALL BEARING	DY-100156010
39	PINION YOKE	DY-102073010	90	PIN	DY-100120010
40	PINION GEAR	DY-100980013	96X	PALM SIDE PLATE ASSEMBLY	DY-UA2322050
41	PINION YOKE SPRING	DY-100059020	98	CONTROL DIAL	DY-101699140
42	RATCHET	DY-100344010	99	SPOOL COVER	DY-101304011
43	RATCHET WASHER	DY-102247050	100	MAGNET HOLDER ASSEMBLY	DY-U00676012
44	DRIVE GEAR	DY-100970010	103	SPRING	DY-100486010
45	DRAG WASHER-L	DY-102377010	104	SLIDE CAM	DY-101848010
46	DRAG WASHER-D1	DY-100057020	105	SPOOL COVER SCREW	DY-100141010
47	DRAG WASHER-A	DY-100985010	106	SPOOL SPACER-A	DY-101850010
48	DRAG WASHER-D2	DY-100986011	107	BALL BEARING	DY-100155010
49	SLEEVE WASHER(OPTIONAL)	DY-100086020	108	BEARING RETAINER	DY-102976010
50	SLEEVE	DY-100418011	110	PILLAR-A	DY-102675010
51X	GEAR SIDE PLATE ASSEMBLY	DY-U02541060	111	DRAG SPRING WASHER	DY-101205010
53	ONE WAY CLUTCH	DY-101515010			

## SDW2XH

Key #	Description	Order ID #		Key #	Description	Order ID #
1	FRAME	DY-102650060		54	O-RING	DY-100209020
2	CLUTCH BAR PLATE-R/L	DY-102327010		55	BALL BEARING	DY-104541010
4	CLUTCH BAR	DY-102652010		56	BEARING RETAINER	DY-101588011
5	CLUTCH LINK	DY-102328010		57X	CAST CONTROL CAP ASSEMBLY	DY-U02254060
6	CLUTCH BAR SCREW	DY-100335020		58	CLICKER	DY-101674011
7	LEVEL WIND ASSEMBLY	DY-102329010		59	CLICK PLATE	DY-101675011
8	PIPE	DY-100491022		60	CLICK PLATE RETAINER	DY-101543012
9	WORM SHAFT	DY-103464010		61	TENSION WASHER	DY-100073011
10	BALL BEARING	DY-104544010		62	SPOOL SPACER-B	DY-100074011
12	IDLER-S	DY-100019010		63	LOCKING PIN	DY-103648040
13	WORM SHAFT PIN	DY-100020010		64	E-RING	DY-100621010
15	WORM SHAFT BUSHING-B	DY-100145011		65	LOCKING PIN SPRING	DY-101308010
16	WORM SHAFT WASHER	DY-100539020		66	GEAR SIDE COVER SCREW-A	DY-100035010
17	E-RING	DY-100047010		67	GEAR SIDE COVER SCREW-B	DY-100035020
18	PILLAR-B	DY-102676010		68	GEAR SIDE COVER SCREW-C	DY-102341010
19	LEVEL WIND PIN	DY-100464011		69	LUBE PORT CAP	DY-101698140
20	SPACER(OPTIONAL)	DY-100025010		70	LUBE PORT CAP SCREW	DY-100202020
21	LEVEL WIND NUT	DY-100288021		71	DRAG SPRING WASHER	DY-100088010
22	FRONT COVER	DY-102651060		72	CLICK HOLDER	DY-101765010
23	FRONT COVER SCREW	DY-100152010		73X	STAR DRAG COMPLETE	DY-U02545162
24	BALL BEARING	DY-104542010		74	CLICKER	DY-101763010
25	CRANK SHAFT	DY-103267010		75	CLICK PLATE	DY-101764010
26	IDLER-L WASHER-A	DY-100548010		76	CLICK PLATE RETAINER	DY-101766011
27	IDLER-L	DY-101938020		77	HANDLE WASHER	DY-100933010
28	IDLER-L WASHER-B	DY-100045020		78X	HANDLE COMPLETE	DY-101806170
29	BEARING PLATE	DY-100817011		79	BALL BEARING	DY-104543010
30	E-RING	DY-100047010		80	HANDLE KNOB	DY-102986010
31	BEARING PLATE SCREW	DY-100112040		81	BALL BEARING	DY-104543010
32	YOKE HOLDER	DY-100029010		82	HANDLE KNOB SCREW	DY-100180010
33	CLUTCH CAM	DY-100666012		83	HANDLE KNOB CAP	DY-101851100
34	CLUTCH SPRING	DY-101336011		85	HANDLE NUT	DY-100319090
35	KICK LEVER	DY-102307011		86	HANDLE NUT RETAINER	DY-101798020
36	KICK LEVER SPRING	DY-102048010		87	SCREW	DY-101202020
37	CAM PLATE	DY-101364010		88X	SPOOL COMPLETE	DY-102682050
38	CAM PLATE SCREW	DY-100697020		89	BALL BEARING	DY-100156010
39	PINION YOKE	DY-102073010		90	PIN	DY-100120010
40	PINION GEAR	DY-102094011		96X	PALM SIDE PLATE ASSEMBLY	DY-UA2322050
41	PINION YOKE SPRING	DY-100059020		98	CONTROL DIAL	DY-101699140
42	RATCHET	DY-100344010		99	SPOOL COVER	DY-101304011
43	RATCHET WASHER	DY-102247050		100	MAGNET HOLDER ASSEMBLY	DY-U00676012
44	DRIVE GEAR	DY-103015010		103	SPRING	DY-100486010
45	DRAG WASHER-L	DY-102377010		104	SLIDE CAM	DY-101848010
46	DRAG WASHER-D1	DY-100057020		105	SPOOL COVER SCREW	DY-100141010
47	DRAG WASHER-A	DY-100985010		106	SPOOL SPACER-A	DY-101850010
48	DRAG WASHER-D2	DY-100986011		107	BALL BEARING	DY-100155010
49	SLEEVE WASHER(OPTIONAL)	DY-100086020		108	BEARING RETAINER	DY-102976010
50	SLEEVE	DY-100418011		110	PILLAR-A	DY-102675010
51X	GEAR SIDE PLATE ASSEMBLY	DY-U02541090		111	DRAG SPRING WASHER	DY-101205010
53	ONE WAY CLUTCH	DY-101515010				

## SDW2SHL

Key #	Description	Order ID #	Key #	Description	Order ID #
1	FRAME	DY-102660060	54	O-RING	DY-100209020
2	CLUTCH BAR PLATE-R/L	DY-102354010	55	BALL BEARING	DY-104541010
4	CLUTCH BAR	DY-102654010	56	BEARING RETAINER	DY-101588011
5	CLUTCH LINK	DY-102355010	57X	CAST CONTROL CAP ASSEMBLY	DY-U02254060
6	CLUTCH BAR SCREW	DY-100335020	58	CLICKER	DY-101674011
7	LEVEL WIND ASSEMBLY	DY-102329010	59	CLICK PLATE	DY-101675011
8	PIPE	DY-100491022	60	CLICK PLATE RETAINER	DY-101543012
9	WORM SHAFT	DY-103464010	61	TENSION WASHER	DY-100073011
10	BALL BEARING	DY-104544010	62	SPOOL SPACER-B	DY-100074011
12	IDLER-S	DY-100019010	63	LOCKING PIN	DY-103648040
13	WORM SHAFT PIN	DY-100020010	64	E-RING	DY-100621010
15	WORM SHAFT BUSHING-B	DY-100145011	65	LOCKING PIN SPRING	DY-101308010
16	WORM SHAFT WASHER	DY-100539020	66	GEAR SIDE COVER SCREW-A	DY-100035010
17	E-RING	DY-100047010	67	GEAR SIDE COVER SCREW-B	DY-100035020
18	PILLAR-B	DY-102676010	68	GEAR SIDE COVER SCREW-C	DY-102341010
19	LEVEL WIND PIN	DY-100464011	69	LUBE PORT CAP	DY-101698140
20	SPACER(OPTIONAL)	DY-100025010	70	LUBE PORT CAP SCREW	DY-100202020
21	LEVEL WIND NUT	DY-100288021	71	DRAG SPRING WASHER	DY-100088010
22	FRONT COVER	DY-102651060	72	CLICK HOLDER	DY-101765010
23	FRONT COVER SCREW	DY-100152010	73X	STAR DRAG COMPLETE	DY-U02547102
24	BALL BEARING	DY-104542010	74	CLICKER	DY-101763010
25	CRANK SHAFT	DY-103269010	75	CLICK PLATE	DY-101764010
26	IDLER-L WASHER-A	DY-100548010	76	CLICK PLATE RETAINER	DY-101766011
27	IDLER-L	DY-101938020	77	HANDLE WASHER	DY-100933010
28	IDLER-L WASHER-B	DY-100045020	78X	HANDLE COMPLETE	DY-101806170
29	BEARING PLATE	DY-100817011	79	BALL BEARING	DY-104543010
30	E-RING	DY-100047010	80	HANDLE KNOB	DY-102986010
31	BEARING PLATE SCREW	DY-100112040	81	BALL BEARING	DY-104543010
32	YOKE HOLDER	DY-100029010	82	HANDLE KNOB SCREW	DY-100180010
33	CLUTCH CAM	DY-100908012	83	HANDLE KNOB CAP	DY-101851100
34	CLUTCH SPRING	DY-101405010	85	HANDLE NUT	DY-101176090
35	KICK LEVER	DY-102308011	86	HANDLE NUT RETAINER	DY-101798020
36	KICK LEVER SPRING	DY-102058010	87	SCREW	DY-101202020
37	CAM PLATE	DY-101218010	88X	SPOOL COMPLETE	DY-102682050
38	CAM PLATE SCREW	DY-100697020	89	BALL BEARING	DY-100156010
39	PINION YOKE	DY-102083010	90	PIN	DY-100120010
40	PINION GEAR	DY-100981013	96X	PALM SIDE PLATE ASSEMBLY	DY-UA2352050
41	PINION YOKE SPRING	DY-100059020	98	CONTROL DIAL	DY-101699140
42	RATCHET	DY-100344010	99	SPOOL COVER	DY-101304011
43	RATCHET WASHER	DY-102247050	100	MAGNET HOLDER ASSEMBLY	DY-U00676012
44	DRIVE GEAR	DY-100972010	103	SPRING	DY-100486010
45	DRAG WASHER-L	DY-102377010	104	SLIDE CAM	DY-101848010
46	DRAG WASHER-D1	DY-100057020	105	SPOOL COVER SCREW	DY-100141010
47	DRAG WASHER-A	DY-100985010	106	SPOOL SPACER-A	DY-101850010
48	DRAG WASHER-D2	DY-100986011	107	BALL BEARING	DY-100155010
49	SLEEVE WASHER(OPTIONAL)	DY-100086020	108	BEARING RETAINER	DY-102976010
50	SLEEVE	DY-100418011	110	PILLAR-A	DY-102675010
51X	GEAR SIDE PLATE ASSEMBLY	DY-U2543040	111	DRAG SPRING WASHER	DY-101205010
53	ONE WAY CLUTCH	DY-101515010			